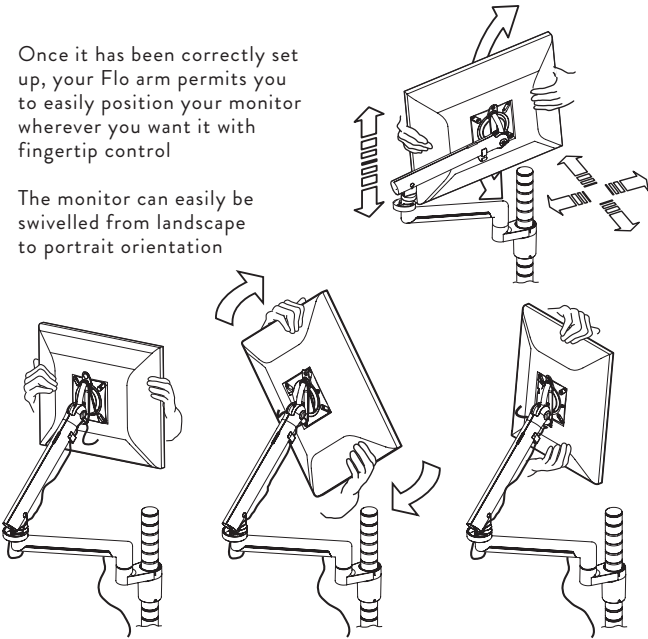


USING YOUR FLO ARM

10

Once it has been correctly set up, your Flo arm permits you to easily position your monitor wherever you want it with fingertip control

The monitor can easily be swivelled from landscape to portrait orientation



USEFUL TIP

Ensure you have allowed enough free cable for screen rotation

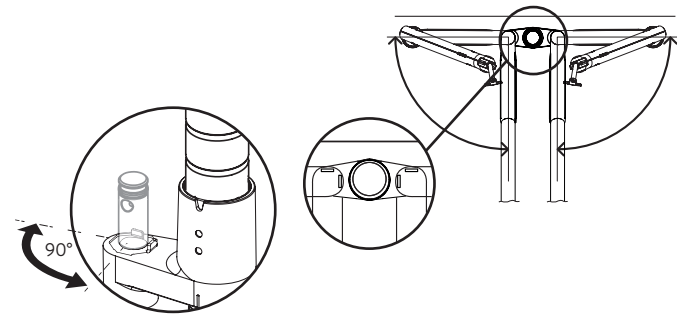
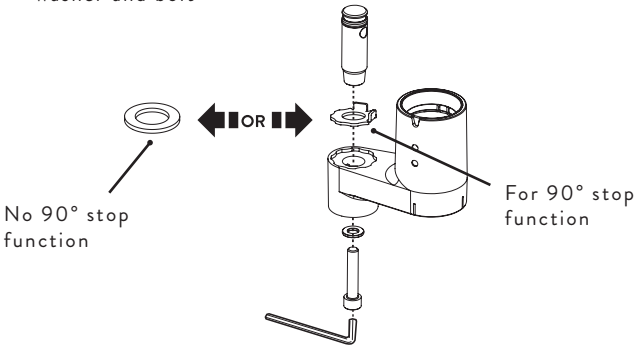
FLO MODULAR DUAL MOUNT ASSEMBLY

FLO MODULAR DUAL CLAMP BRACKET ASSEMBLY

11

Note that bracket is inverted for 2<sup>nd</sup> arm installation

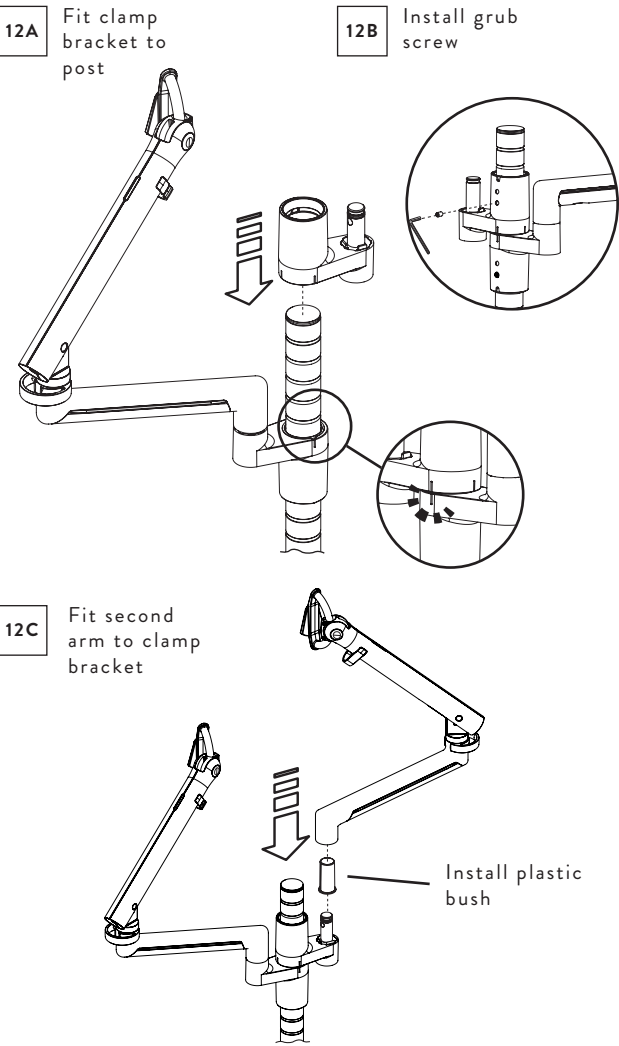
Install spigot, washer and bolt



Ensure the washer is orientated correctly for required 90° stop position

INSTALL SECOND FLO MODULAR CLAMP BRACKET AND ARM

12



IMPORTANT

To complete installation of second monitor repeat from step 5 overleaf

Please consider leaving these instructions with the product if further installation may be required by others

DYN-013-007-PMC-INST-B-FEB 2018

PATENTS

Colebrook Bosson Saunders hold a number of patents and other intellectual property rights covering our products and processes. You can find patent information on our website at: [www.colebrookbossonsaunders.com/patents](http://www.colebrookbossonsaunders.com/patents)

DISCLAIMER

As part of Colebrook Bosson Saunders ongoing product improvement programme, the design of products may change without prior notice and details may vary from those illustrated.

DESK FIXING COMPATIBILITY

CODE	MOUNT DESCRIPTION	WITH 90° STOP	WITHOUT 90° STOP
WORKSURFACE MOUNTS			
UNI/LCLM38	Universal Desk Clamp	Not recommended	✓ Recommended
UNI/TAC/001	Universal Top Mount Clamp	Not recommended	✓ Recommended
UNI/SMC/001	Universal Screen Mount Clamp	Not recommended	✓ Recommended
UNI/CSG100/K	Cast Grommet Mount	Not recommended	✓ Recommended
UNI/HLC/001	Universal High Load Split Mount Clamp	✓ Recommended	✓ Recommended
UNI/HLC/002	Universal High Load Top Mount Clamp	✓ Recommended	✓ Recommended
WSH/100SI2/K	Through Desk Mount	Not recommended	✓ Recommended
WSH/50SI2/K	Through Desk Mount	Not recommended	✓ Recommended

SLATWALL / WALL MOUNTS

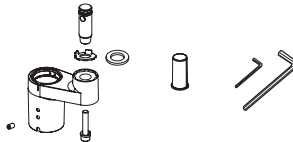
UNI/MSB/001	Multi Screen Slatwall Mount	✓ Recommended	✓ Recommended
UNI/MSB/002	Multi Screen Slatwall Mount	✓ Recommended	✓ Recommended
UNI/SWB/001	Universal Slatwall Mount	Not recommended	✓ Recommended
UNI/SWB/002	Universal Slatwall Mount	Not recommended	✓ Recommended

\* Note that the Flo modular will fit to this mount but the post-mount component cannot clamp to it so arm articulation will be unpredictable.

COMPONENT LIST

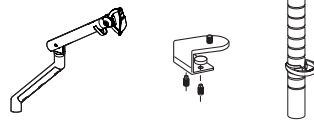
DYN/013/007/PMC  
FLO MODULAR POST MOUNT COMPONENT

- Spigot x 1
- 90° stop Washer x 1
- M16 Washer x 1
- Bolt x 1
- Lock washer x 1
- Grub screw x 1
- 3mm Allen Key x 1
- 6mm Allen Key x 1
- Plastic bush x 1



OTHER REQUIRED COMPONENTS

- Wishbone post x 1
- Desk fixing x 1
- Flo Monitor arm x 1

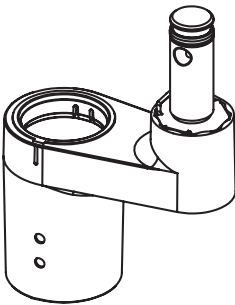


IMPORTANT

Dual install requires 2 x DYN/013/007/PMC and 2 x Flo monitor arms

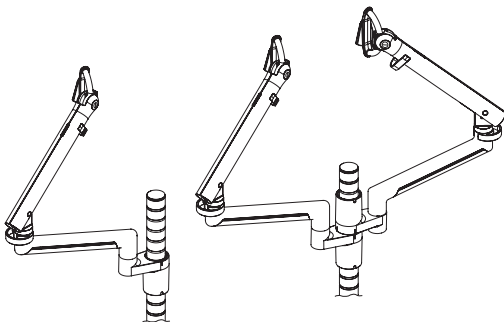


[www.colebrookbossonsaunders.com](http://www.colebrookbossonsaunders.com)

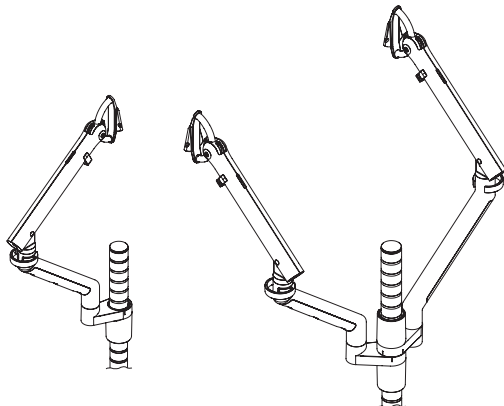


FLO MODULAR INSTRUCTIONS

DYN/013/007/PMC



SHOWS DYN/013/007 MOUNTED



SHOWS DYN/013/010 MOUNTED



## FIXING POST TO DESK OPTIONS

1

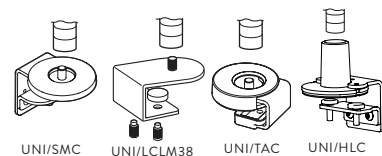
Follow one of the Desk and Post fixing options described below

**IMPORTANT**  
Refer to individual instructions

### IMPORTANT

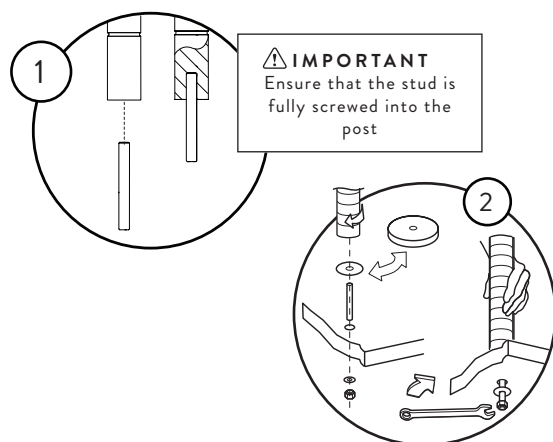
Please see compatibility table overleaf for guidance on recommended desk fixings

## A DESK CLAMP



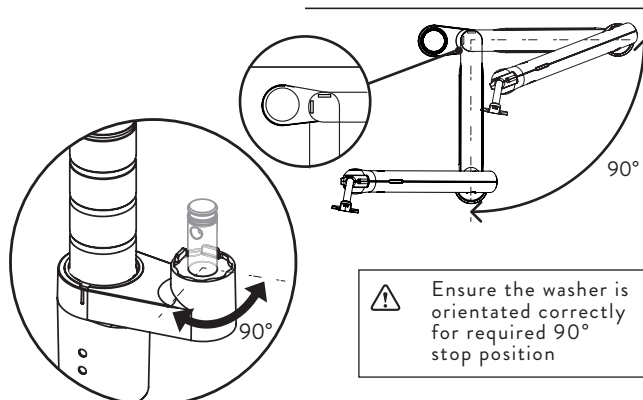
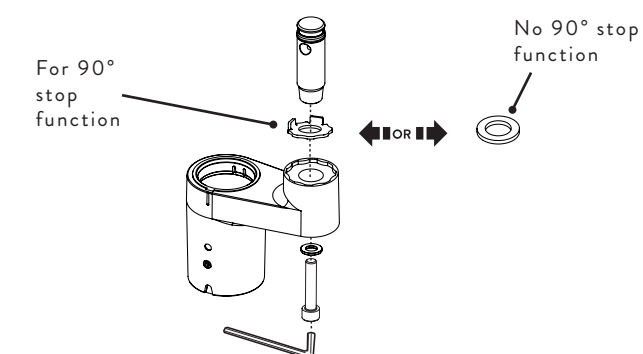
## B THROUGH DESK MOUNT

UNI/50S12/K  
UNI/100S12/K



## ASSEMBLE POST MOUNT COMPONENTS

2

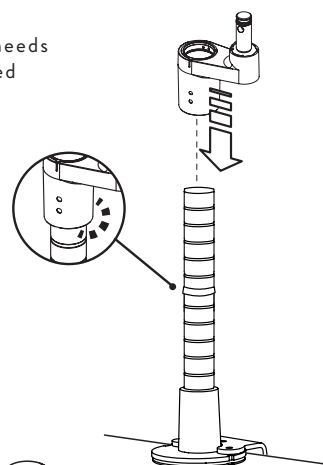


## ATTACH CLAMP BRACKET TO POST

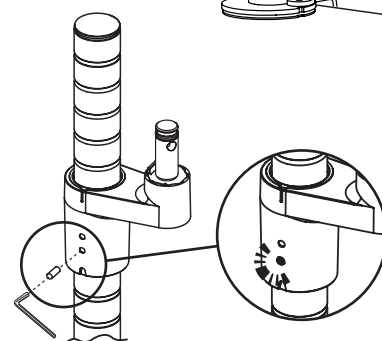
3

See also step 2 if 90° stop needs to be reconfigured or removed

3A Install Clamp bracket to Post

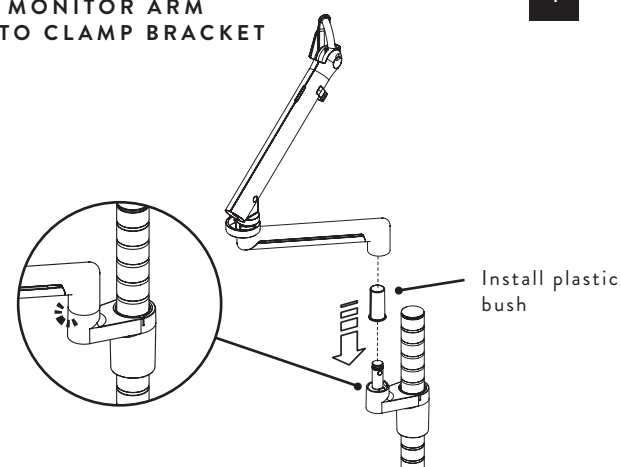


3B Install Grub screw to secure



## FIT MONITOR ARM ONTO CLAMP BRACKET

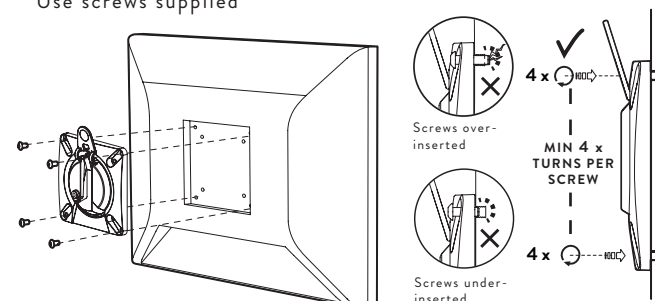
4



## ATTACH MONITOR MOUNT PLATE TO MONITOR

5

Use screws supplied



### IMPORTANT

It is the responsibility of the installer to ensure all mounting screws are properly engaged with a minimum of 4 x 360° turns into the display. Under or over insertion may cause damage to the equipment or injury to personnel.

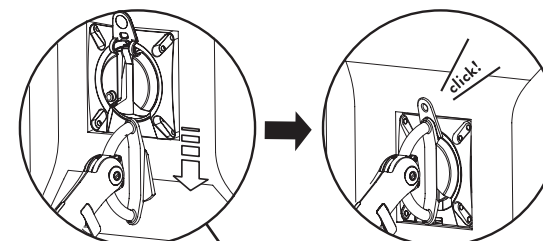
**MAX**  
SCREEN WEIGHT  
9KG/19.8LB



## MOUNT MONITOR TO ARM

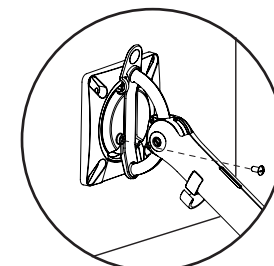
6

6A



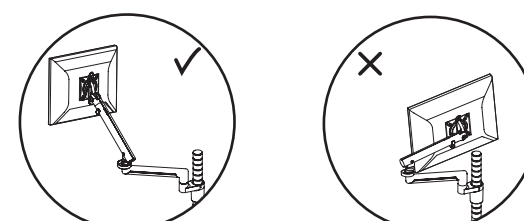
6B

Install optional security screw if required



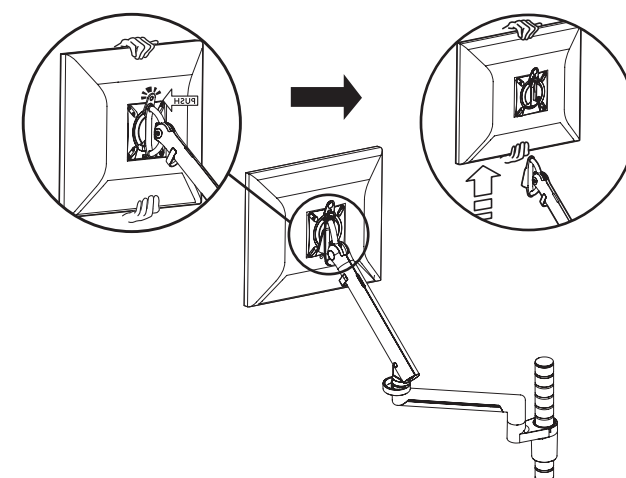
## TO REMOVE MONITOR

7



### IMPORTANT

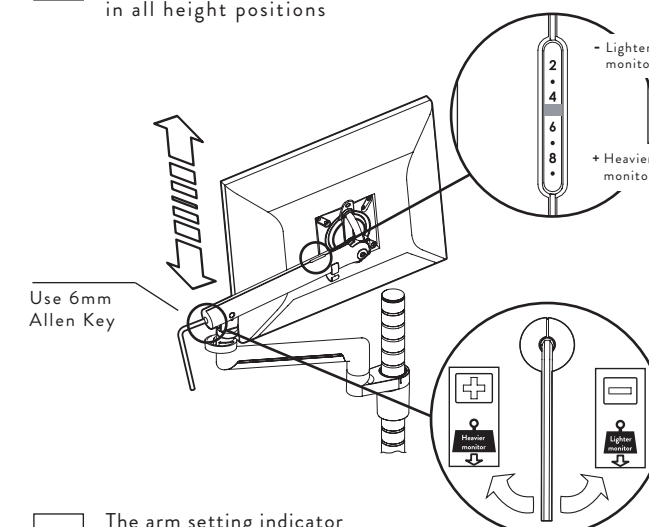
Raise arm to uppermost position before removing monitor otherwise it may spring up when unloaded



## ADJUST ARM TO SUIT WEIGHT OF MONITOR

8

8A Turn adjuster screw until monitor 'floats' in all height positions

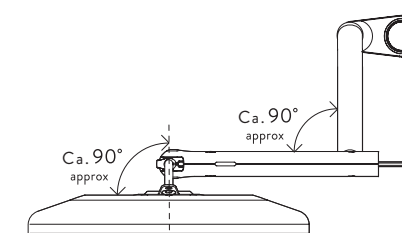


8B The arm setting indicator allows for quick installation of multiple monitors

You can quickly 'dial in' to the same setting, then if necessary, fine tune the adjustment to balance the monitor

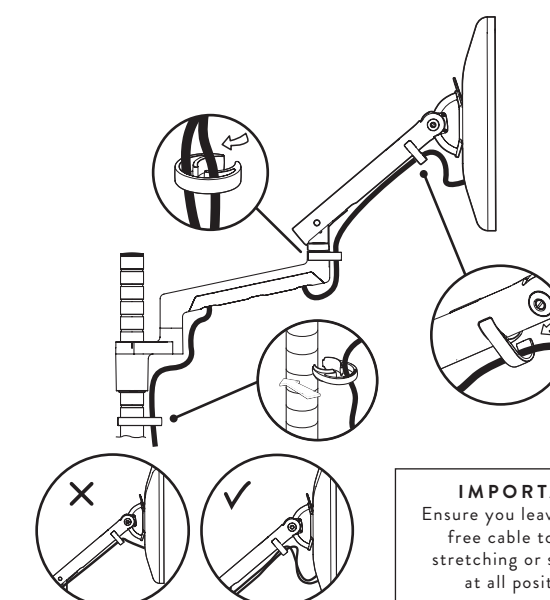
### USEFUL TIP

Adjustment will be easier and more precise if arm is positioned as shown below whilst adjusting



## INSTALL MONITOR CABLES INTO CABLE MANAGEMENT FEATURES

9



### IMPORTANT

Ensure you leave enough free cable to avoid stretching or snagging at all positions