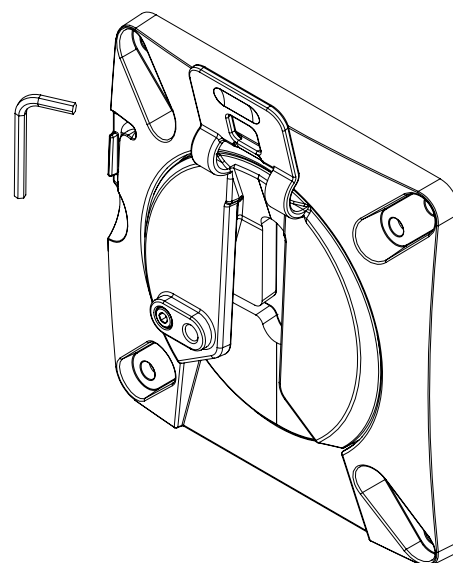




Please consider leaving these instructions with the product if further installation may be required by others



VESA PLATE FOR OLLIN, FLO & WISHBONE RANGE

UNI/VES/001

WARNING

- Do not use this product for any purpose other than that for which it was designed
- Ensure desk/work surface is suitable to take the weight of the arm/s and monitors
- Supported weight must not exceed the maximum load per arm
- Take care when installing as fingers could become trapped

MAINTENANCE AND INSPECTION

- Ensure all screws and fixings are fully tightened and occasionally re-tighten if necessary.
- Clean with a damp cloth. DO NOT use solvents.

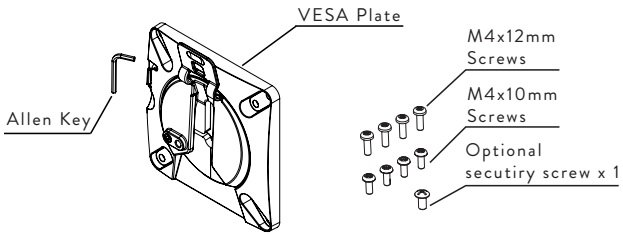
DISCLAIMERS

- The use of power tools, lever bars or excessive force during the installation, or reconfiguration of the product will invalidate your guarantee
- Failure to observe the recommendations in the use, and configuration of these products may affect your guarantee
- As part of Colebrook Bosson Saunders ongoing product improvement programme, the design of products may change without prior notice and details may vary from those illustrated.

PATENTS

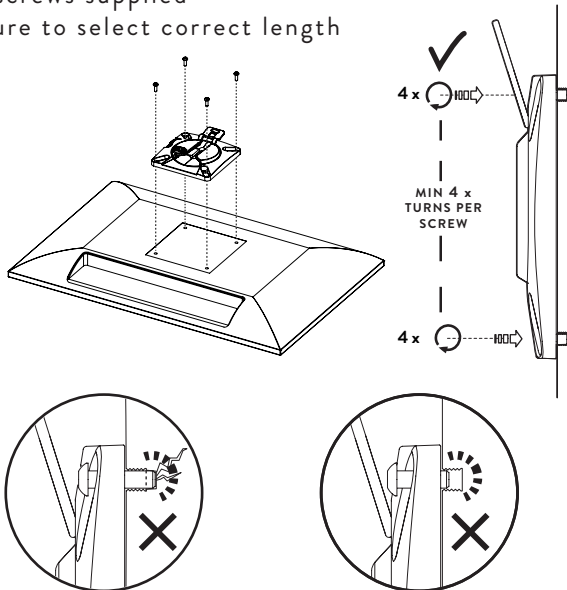
Colebrook Bosson Saunders hold a number of patents and other intellectual property rights covering our products and processes. You can find patent information on our website at:
www.colebrookbossonsaunders.com/patents

PARTS INCLUDED



ATTACH VESA PLATE TO MONITOR

Use screws supplied
Be sure to select correct length

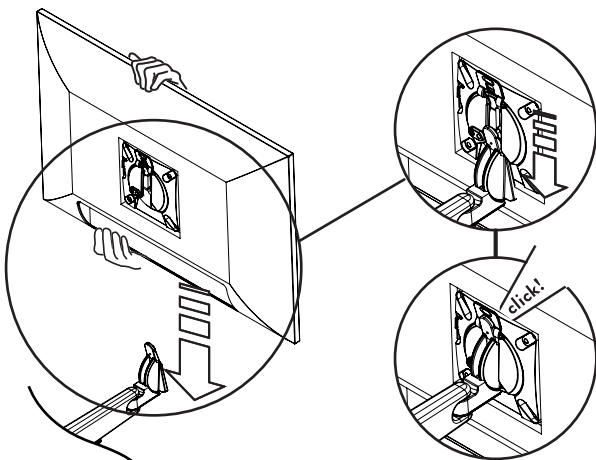


IMPORTANT

It is the responsibility of the installer to ensure all mounting screws are properly engaged with a minimum of 4 x 360° turns into the display. Under or over insertion may cause damage to the equipment or injury to personnel.



INSTALLING CABLES



NOTE

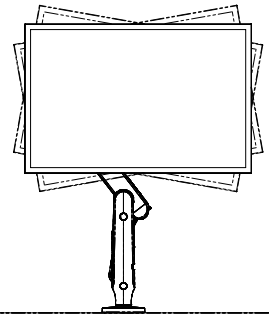
Please also refer to the installation instructions for your chosen monitor arm for specific monitor mount procedure.

OPTIONAL VESA PLATE FRICTION ADJUSTMENT

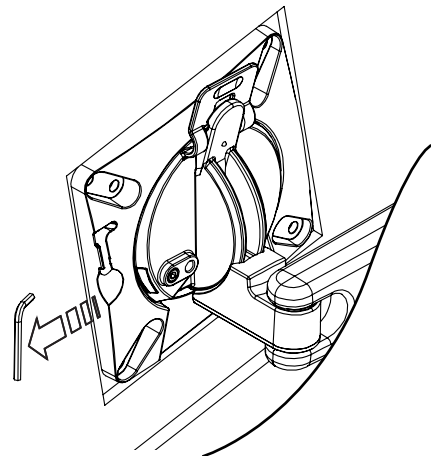
3

IMPORTANT

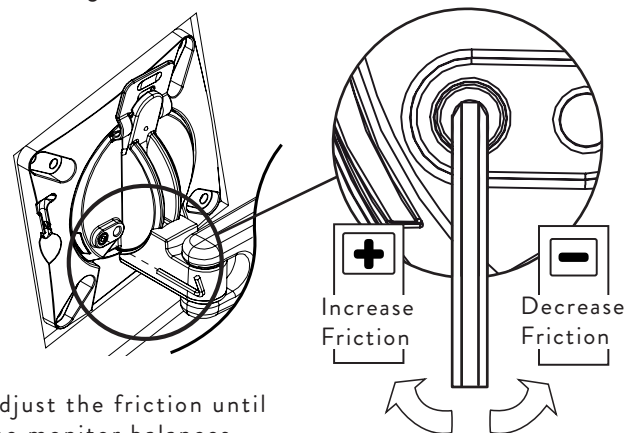
Portrait-to-landscape monitor rotation is factory-set for optimum performance, however if the monitor droops sideways, rotation friction can be adjusted as described below.



3A Remove allen key from slot in VESA plate



3B Adjust friction to suit the offset weight of the monitor



Adjust the friction until the monitor balances horizontally above the desk

OPTIONAL FIT SECURITY SCREW IF REQUIRED

3

Security screw locks monitor to arm

