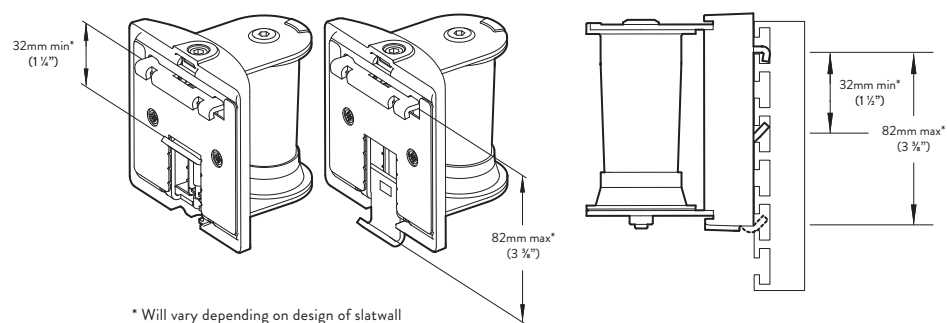


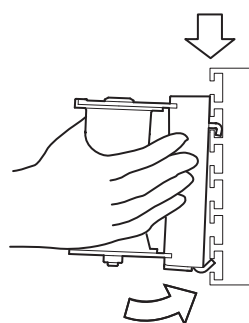
## Before you start

- 1-1** Check to see the slatwall is strong enough to support the load and that the slats fall within range of adjustment

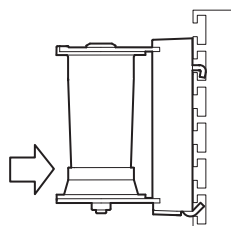


## Attaching bracket to slatwall

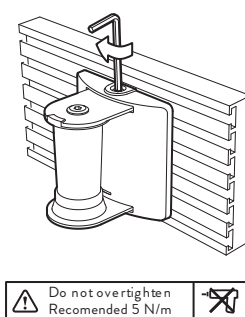
- 2-1** Offer to slatwall



- 2-2** Push bracket against slatwall

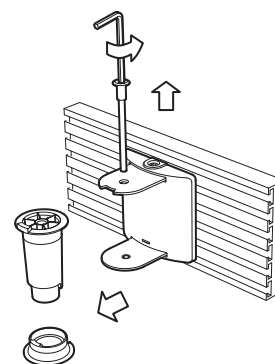


- 2-3** Tighten adjuster screw

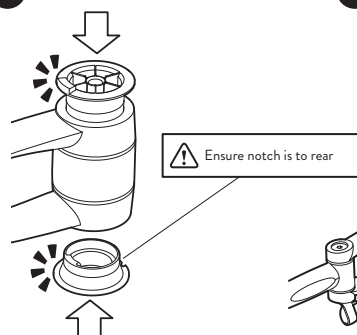


## Installing the arm

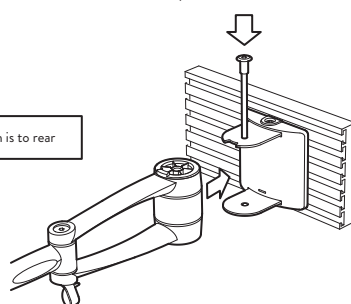
- 3-1** Remove spacers



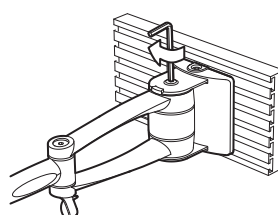
- 3-2** Add spacers to arm



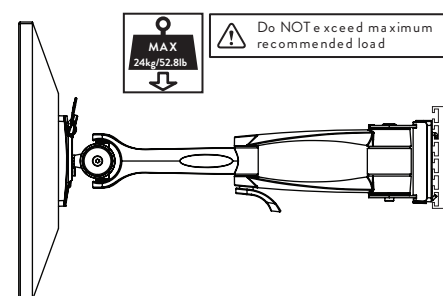
- 3-3** Add arm to the bracket and insert spacer screw



- 3-4** Tighten spacer screw

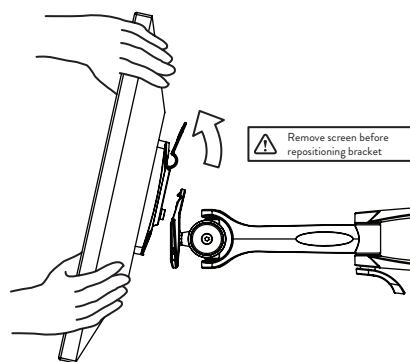


## Maximum loading

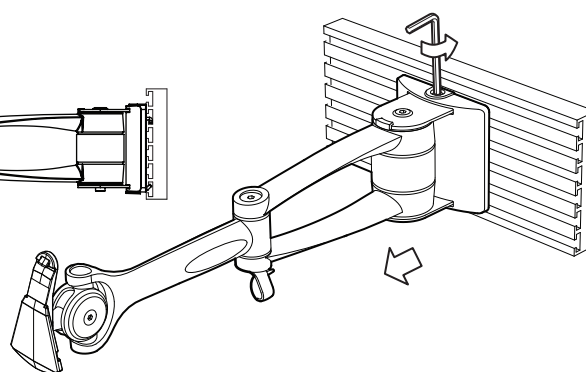


## Repositioning bracket

- 4-1** Remove screen



- 4-2** Unwind adjusting screw until jaws become free then remove bracket



### WARNING

- Ensure the slatwall is suitable to take the weight of the screen and mounting.
- Do not use this product for any purpose other than that for which it was designed.
- Hold the screen tightly when making adjustments.
- Care should be taken to avoid trapping fingers.
- Do not dismantle or modify the screen mounting.
- Supported weight must not exceed 24Kg (52.8lb)

### MAINTENANCE AND INSPECTION

- Ensure all screws are tightened and occasionally adjust if needed
- Clean with a damp cloth, NO solvents

### DISCLAIMERS

- The use of power tools, lever bars or excessive force during the installation, or re-configuration of the product will invalidate your guarantee
- Failure to observe the recommendations in the use, and configuration of these products may affect your guarantee

### PATENTS

Colebrook Bosson Saunders hold a number of patents and other intellectual property rights covering our products and processes. You can find patent information on our website at: [www.colebrookbossonsaunders.com/patents](http://www.colebrookbossonsaunders.com/patents)

Please consider leaving these instructions with the product if further installation may be required by others